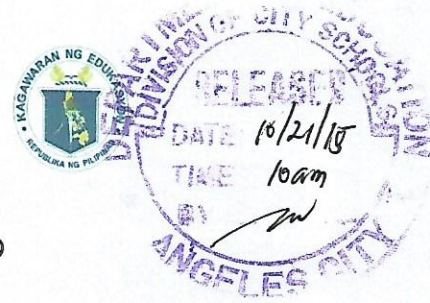




Department of Education
Region III
DIVISION OF CITY SCHOOLS
Angeles City
Jesus Street, Pulungbulu, Angeles City
Tel. No. : (045) 322- 4702 / Fax No.: (045) 887- 6099




October 20, 2015

DIVISION MEMORANDUM
No. 258 s.2015

I SPEAK ENGLISH CLUB (ISEC) MEMBERSHIP

To: Heads of Public Elementary School Heads

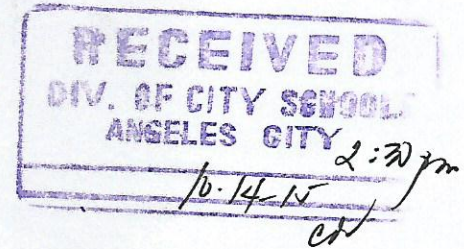
1. Please be informed that the National English Club is inviting all Elementary Students to become Bonafide Members of I Speak English Club (ISEC) for the School Year 2015-2016.
2. The target participants are the Grades II to VI pupils.
3. For more details, refer to the attached sheet.
4. Wide dissemination of the contents of this memorandum is earnestly desired.


LEILANI S. CUNANAN, CESO VI
Officer -in- charge
Office of the Schools Division Superintendent



September 15, 2015

The Honorable Regional Director
Department of Education (Dep-Ed)
Region III
Maimpis, City of San Fernando Pampanga



Dear Sir/Madam,

I Speak English Club (ISEC) invites all **ELEMENTARY STUDENTS** to become Bonafide Members for the school year 2015-2016 and thus be part of the

ISEC ENGLISH ENRICHMENT 10 LESSONS DRILL EXERCISES PROGRAM

Attached are our communication letters on the benefits and privileges of becoming a member of our prestigious National English club as well as the mechanics on how to participate to our 10 Lessons Program.

This ISEC program will target elementary students which will help them improve their skills through rigorous practice at an early age that can lead to actual "PROGRESS" with their proficiency with the English Language and also give opportunities for extra learning.

Our objectives and goals for this 10 Lessons Program is as follows

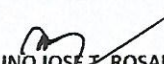
1. Provide **more practice language exercises** to promote progress on the English Language
2. Lower the **FRUSTRATION LEVEL** in learning the English language for better performance of the learners
3. Add more FUN in this exercise by providing a **RAFFLE DRAW** to win awesome prizes in the DIVISION and NATIONAL levels.

May we ask you to provide a **MEMO** to distribute this invitation to realize these objectives. Your patronage to good English education will become a doorway for young minds to succeed in communicating to the linked world with competence and proficiency.

Thank you.

DepED Region III Referral No. 91, s. 2015

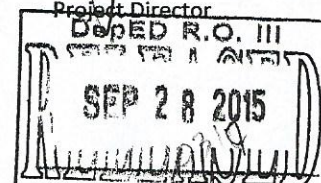
Respectfully referred to the Schools Division Superintendents, enjoining the evaluation of this subject request in accordance with DepED Order No. 8, s. 2013, "Policy Guidelines on Regulating the Issuance of DepED Advisories" and Regional Memorandum No. 130, s. 2014 entitled "Issuance of Advisories on Goods and Services".


RIZALINO JOSE T. ROSALES
Officer-in-Charge
Office of the Regional Director

Very truly yours,

Jun Blase Mejica

Project Director



ISEC ENGLISH ENRICHMENT (10) LESSONS DRILL EXERCISES IN LOOSE SHEETS PAPER FORM

Aims to:

1. Provide **more practice language exercises** to promote progress on the English Language
2. Lower the **FRUSTRATION LEVEL** in learning the English language for better performance of the learners
3. Add more **FUN** in this exercise by providing a **RAFFLE DRAW** to win awesome prizes in the **DIVISION** and **NATIONAL** levels.

MECHANICS

1. All grades II to VI are entitled to become a Bonafide Member of I Speak English Club (ISEC) with **FREE Membership** within this week only. (No need to pay the membership, it will automatically be waived).
2. The privilege of the mentor will automatically enroll them to the 10 Lessons Exercise for **English Enrichment**. Each member will receive the Loose Sheets Lessons in paper form to be delivered to the school thru LBC or any other courier available in the area. They will enjoy the lessons as additional exercises for their current lessons in the English subject.
3. The only obligation of the ISEC Member is to pay the (P100) one hundred pesos to cover the freight delivery charges and the cost of paper materials
4. At least **50 pupils per level** must avail the **FREE Membership** in order to enjoy the 10 Lessons Loose Sheets but a required postage fee and the cost of materials of (P100) one hundred pesos per pupil must be paid within 7 days upon receiving this letter.
5. A **volunteer teacher** should handle these 10 lessons to guide the pupils in understanding the lessons in **(4) four equal sessions** during their break time only and should not interrupt their regular class schedule. The volunteer teacher is responsible to provide the answer, since ISEC will not provide any answer sheets as part of the work of the volunteer. Be sure **50 pupils** must enroll per grade level, otherwise, the pupils will simply bring the lesson in their respective houses.

This **Certificate of Membership** will be awarded to all Learners who avail the 7 day promo for membership.



6. **Delivery of loose sheets for the first 5 lessons and membership certificate** will be delivered immediately after payment and the **next 5 lessons** will follow in **45 days** together with the **GOLD MEDAL**

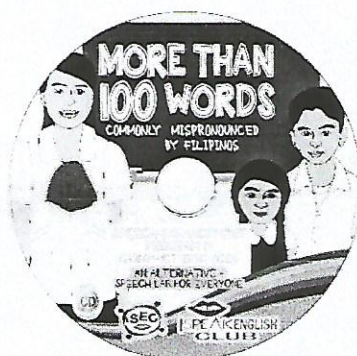
The **Volunteer Teacher** being responsible for 50 pupils to teach the (10) ten lessons and provide the answer to the drill questions will receive the following:



1. **P1,500 CASH** as compensation for the 4 sessions (4hr) to teach the 10 lessons and guide the 50 pupils to answer the drill exercises



2. This **CERTIFICATE OF ANNUAL MEMBERSHIP** is to give recognition to ALL BONAFIDE MEMBERS for their participation in any activity of the club. This can be filed for teachers' portfolio to be used in ranking and promotion as investment to become better professionals.



3. This Compact Disc entitled as **MORE THAN 100 COMMONLY MISPRONOUNCED WORDS** is an effective way to learn the right stress of an ENGLISH word. This **Audio Visual CD** will enhance the skill to achieve ORAL FLUENCY with the appropriate English stress. Selling Price is P600/ CD but is **FREE** to ISEC members.



4. The word spelling activity with **MORE THAN 1,000 COMMONLY MISPELLED WORDS**. With a copy of this workbook, a member will be able enjoy and practice, practice, practice to become a better speller. Selling price is P300/ workbook but is **FREE** to ISEC members.



5. Get 50% discounts to **THE 3-DAY NATIONAL ENGLISH WORKSHOP ON POWER SPEAKING, POWER WRITING AND POWER IMAGE**. These workshops are priced with P3000 inclusive of snacks and certificate of participation. All ISEC members are entitled to pay only P1500 for the 3-day seminar. **TEXT YOUR NAME TO (0915-888-0071) TO RESERVE YOUR 50% DISCOUNTED WORKSHOP TICKET.** This is a LIVE-OUT Seminar (Please read Workshop Matrix)

FOR INQUIRY CONTACT US THRU TEXT AT (GLOBE) 0915-888-0071

1. In a class of 50 pupils, one who excels in answering the 10 Lessons Program will receive a GOLD MEDAL for being Best in English from I Speak English Club (ISEC)
2. All Loose Sheets may be sent back to ISEC Mother Club Office: Suite 21 LGI Terrace 49 Aguilar St. SFDM Quezon City for 2 Raffle Draws to win prizes

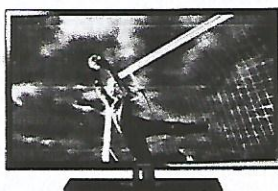
Note:

1. Each class **must be composed of 50 pupils**. More classes can be made as long as it reaches 50 students
2. Delivery of Loose Sheets of the first 5 lessons and Membership Certificate will be delivered **immediately after payment** and the next 5 lessons will follow in **60 days** together with the GOLD MEDAL
3. Teachers Incentive will be delivered thru LBC upon text NOTICE that the class has started on the Loose Sheet. Please **deduct P1,500 immediately** for the Volunteer Teacher Compensation

For **INQUIRY**, contact us through: 0915-888-0071
Ask for JUN

ENGLISH FOR FUN RAFFLE DRAW MECHANICS

1. All ISEC Members can join this raffle draw using the ISEC Loose Sheets as entry to this raffle draw.
2. Be sure the ISEC Loose Sheet is answered and done correctly by the ISEC Member.
3. All (10) ten Loose Sheets Lessons are considered as official raffle entries and can be sent to the draw by the ISEC member.
4. There are (2) two dates of the raffle draw to be done accordingly:
 - a. DIVISION Wide Draw – December 7, 2015
 - b. NATIONAL Wide Draw – March 9, 2016
5. Prizes for the DIVISION Wide Draw are the following:
 - a. 50 Consolation Prizes – Each winner will receive (1) one COMPACT DISC on More than 100 Commonly Mispronounced Words by Filipinos: An Alternative Speech Lab.
 - b. 50 Giveaway Prizes – Each winner will receive (1) one copy of the ACTIVITY BOOK: 8 PARTS OF SPEECH.
6. Prizes for the NATIONAL Draw:
 - a. 1st Prize: (1) one flat Screen TV LED 32" inches
 - b. 2nd Prize: (1) one SAMSUNG GALAXY Tab 7 inch
 - c. 3rd Prize: P5,000 Cash prize
 - d. 50 consolation prizes: each winner will receive (1) one copy of More than 1,000 Misspelled Words by Filipinos



7. All entries of the ISEC Member will be raffled (2x) twice to receive better opportunities of winning a prize. Winners can receive the prize thru Door to door delivery.
8. Mail all entries to: Project Director

Interschools Club Phil. LTD. CO.
Unit 21 LGI Terraces, 49 Aguilar St.
Brgy. Bungad, San Francisco Del Monte, Quezon City

For more info and inquiry about I Speak English Club (ISEC)

Like us on Facebook @Ispeakenglishclubisec

Text Line: (Globe) 09158880071

HOW TO SEND THE FREIGHT CHARGES AND COST OF MATERIALS WITHIN 7 DAYS?

- ❖ **DEPOSIT TO: ANY BRANCH IN YOUR AREA**
PHILIPPINE NATIONAL BANK

Account Name: INTERSCHOOLS CLUBS PHILS. LTD. CO.

- ❖ **THRU PERA PADALA/PAWNSHOPS**

Send to: JUAN B. MEJICA